



Metlam Australia
Toilet Partition
Hardware Finishes

All Metlam Australia products are manufactured to our exacting specifications and we have a strict quality control process. We only use the highest grade raw materials relevant to their categories such as #304 stainless steel, zinc die-cast alloys sourced from Australia and nylon from Europe with proven ductility and toughness for our hinge inserts, and where applicable, electroplated or powder-coated product finished to ISO Standards.

A guide to selecting Toilet Partition Hardware Finishes

When selecting hardware and fixtures, it's important to know which finish to choose. Just like the colour of paint or textiles, finishes play a large role in the atmosphere of a room. Before choosing the finish it's important to look at the adjoining spaces. Has a certain aesthetic already been adopted? Are there traditional lines, minimal or modern shapes, or industrial edges?

The below guide will assist you in picking the perfect finish for your space.

Do you want to make a statement?

If you would like your hardware to make a bold impact, choose a finish that has a lot of contrast with your door colour. For example, black hardware on white doors, or satin chrome plate on timber look doors, creates a statement whilst adding a touch of sophistication and glamour. On the other hand, if you'd like your hardware to be more subtle, choose a finish that is similar in colour and shade to your doors. This will compliment the adjoining space, creating soft lines.

Is your cabinetry warm-toned or cool-toned?

Typically, warm finishes look nice near other warm colours and cool tones look nice with other cool tones. Finishes like Bright Chrome Plate and Satin Chrome Plate offer cool tones to a space, whilst Satin Nickel Plate has a warm undertone. With the increase in popularity of black hardware, due to its neutral undertone, it pairs well with nearly every finish and cabinet colour.

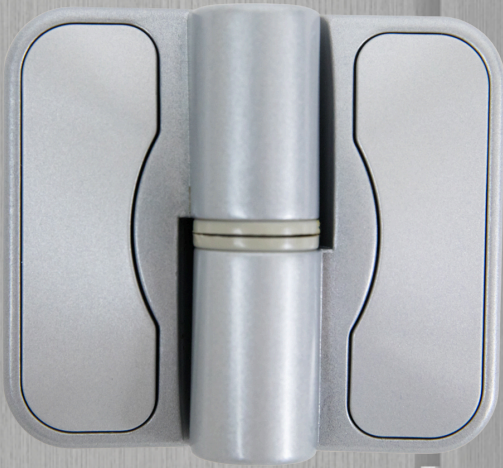
Mixing finishes

We quite often get asked, "Do I have to match all the finishes in my space?" The answer is, absolutely not! Mixing finishes is a great way to add interest to spaces and can give a space a more authentic feel. However, not all finishes look pleasing together. The best way to ensure that your finishes blend nicely is to make sure all of the finishes you use have either a warm undertone or a cool undertone.

Brushed and satin finishes

Traditionally, brushed finishes undergo a brushing process to soften the metal's appearance and satin finishes use an electric plating to achieve a similar effect. These finishes do an excellent job of hiding fingerprints and watermarks making them a terrific choice for high-use hardware.

Toilet Partiton Hardware Finishes



Antimicrobial Finish (ANMB)



Satin Matte Black (DESIGNER)



**Sentinel Authentic Industrial
Stainless Steel Finish**



Satin Chrome Plate Finish (SCP)

Note: Not all Metlam Australia Toilet Partition Hardware (TPH) is available in all finishes listed above. Visit our website for further details on TPH products and available finishes.



Satin Chrome Plate Finish (SCP)



Satin Chrome Plating is an alternative finish to bright chrome and is a popular effect for many toilet partition hardware components.

Featured is our popular Moda Lock and Indicator Set in Satin Chrome Plate.



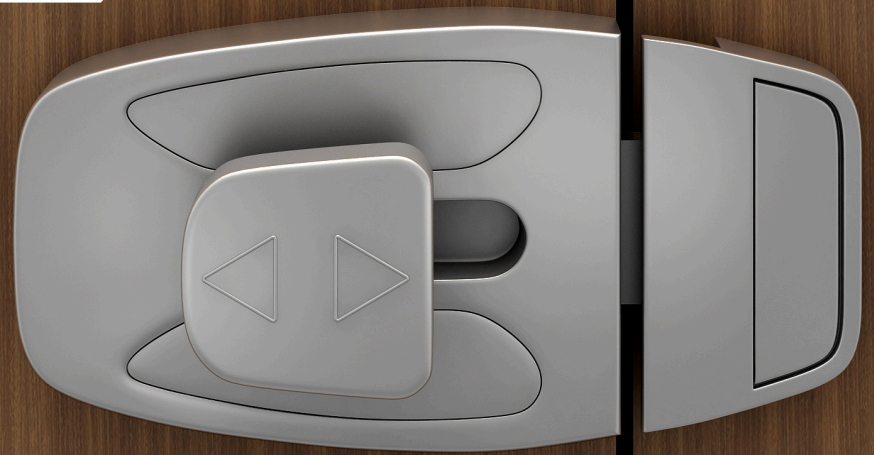
Designer Black



Defined by its sophistication and sleek lines the new Metlam Australia Designer Black finish has become a key style trend in commercial washroom design. Its eye-catching elegant and modern design is sure to create a talking point within the commercial washroom space.

Metlam Australia's Designer Range of black powder-coated toilet partition hardware is sure to give your project that **'wow'** factor.

Featured is our popular Xcel Slidelock & Indicator Set in Designer Black.



Antimicrobial



Metlam Australia's Antimicrobial Range of toilet partition hardware is the first choice for a more hygienic washroom.

Antimicrobial technology describes the collective knowledge, expertise and methods of using additives to create products that are permanently protected against microbes.

Featured is our popular Sera Lock & Indicator Set in Antimicrobial.